

# Alfa SMALL SL 12V 55-105/16

**ALFA SMALL SL 12V**, ALFA semi-electric stackers combine the machine manual traction with electric elevation with 12V battery, and represent the ideal solution for moving medium-light loads: forks are lifted and lowered through the corresponding ascent/descent push-buttons installed on the machine body.

The ALFA SMALL SL 12V 08 version features a lifting system with single stage mast and allows nominal capacities up to 1000 Kg with lifting height to 1600mm.



## ADVANTAGES

### ADAPTABILITY TO THE LOAD:

Manually adjustable forks on fork holder plate; by means of a simple gesture, it is possible to work with the stacker moving loads of different dimensions, and to adapt the machine to the operator's requirements.

### ALTERNATIVE SUPPLY:

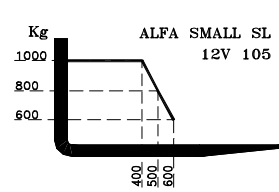
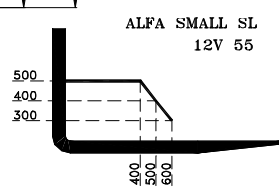
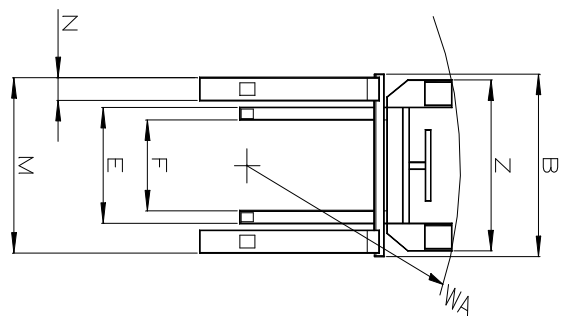
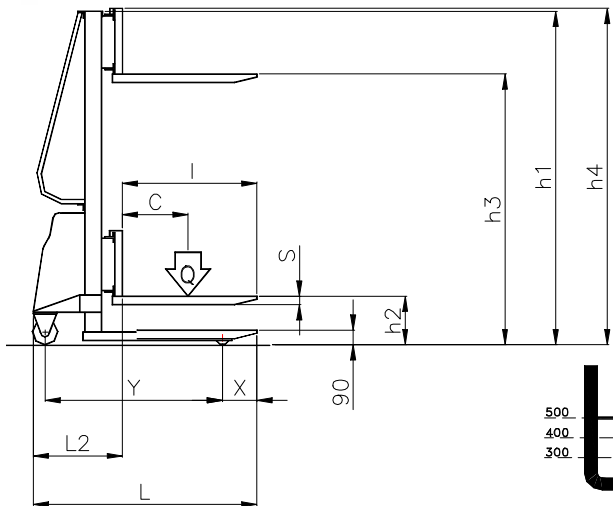
In addition to the version fed by rechargeable battery through the corresponding built-in battery charger, it is also possible to have 220/380V supply, for service in fixed stations or with minimum displacement, everything for the benefit of efficiency and quickness of use.

### SHOCKPROOF CASING:

made of sheet steel and ABS for containing all the primary components, control unit, battery, battery charger, etc.

## STANDARD EQUIPMENT

- ▶ 12V 10A electronic battery charger with microprocessor.
- ▶ 12v 80 Ah battery
- ▶ Manual traction.
- ▶ Emergency button.
- ▶ Push-button control for forks.
- ▶ 800mm-long adjustable forks
- ▶ Electric limit switch.
- ▶ Protection fuse.
- ▶ Single polyurethane roller.
- ▶ Parking brake.
- ▶ Total free lift.
- ▶ Chromed oleodynamic piston.
- ▶ Polyamide wheels with polyurethane covering.



	55	105
M	200/800	240/800
N	100	120
E	520	530
F	405	350

## Technical sheet ALFA SL Small

Specifications		Producer	Armanni	Armanni
Models			Alfa small 55	Alfa small 105
Capacity	Q (Kg)		500	1000
Barycenter	C (mm)		400	400
Traction			Manual	Manual
Driving			Handles	Handles
Weight	Kg		156	210
Wheels front/rear			solid/solid	solid/solid
Dimensions				
Lifting	h3(mm)		1600	1600
Free Lifting	h2 (mm)		1600	1600
Forks Thickness	s (mm)		50	55
Length	L (mm)		1380	1380
Length with forks carrier	L2(mm)		580	580
Width	B (mm)		800	800
Truck height - forks on ground	h1 (mm)		1990	1990
Max height truck	h4 (mm)		1240	1240
Turning radius	W <sub>a</sub> (mm)		1135	1135
Distance of the loading	X (mm)		200	200
Storage corridor Width*	mm		/	/
Distance between axes	y (mm)		1120	1120
Performances				
Lifting motor	Kw		/	/
Lifting with/without loading	m/sec		0,07 / 0,13	0,07 / 0,13
Descent with/without loading	m/sec		0,13 / 0,07	0,13 / 0,07
Max top gradient with/without loading	%		0.8	0.8
Brakes			Manual	Manual
Battery	Ah		80	80
Weight Battery	Kg		20	20
Battery charger	24 V		10	10

Characteristics and dimensions are not binding. Armanni has the right to carry out any kind of variation without the obligation of a written advance notice.

\* Excluding the area of safety for operator