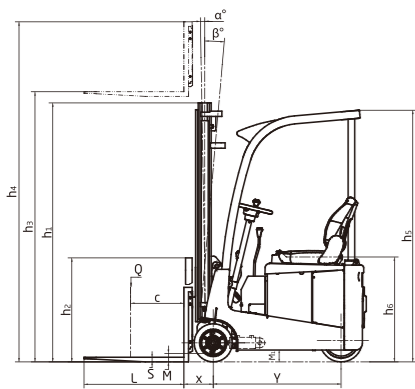


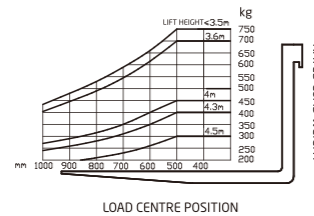
A Series 0.75-0.99t 3-wheel Electric Forklift Specification

		HANGCHA GROUP CO.,LTD.		
		CPD7.5-AC1*/AD2	CPD9.0-AC1*/AD2	CPD9.9-AC1*/AD2
Distinguishing mark	1.1	Manufacturer (abbreviation)		
	1.2	Manufacturers type designation		
	1.3	Drive: electric (battery or mains), diesel, petrol, fuel gas		
	1.4	Operator type: hand, pedestrian, standing, seated, order-picker		
Weight	1.5	Q (kg)	750	900
	1.6	Load centre distance c (mm)	500	400
	1.8	Load distance, centre of drive axle to fork x (mm)	231	231
	1.9	Wheelbase y (mm)	945-1005	945-1005
	2.1	Service Weight	1500/1260	1680/1330
	2.2	Axle loading, laden front/rear	2040/270	2290/350
	2.3	Axle loading, unladen front/rear	790/730	870/810
	3.1	Tyres: solid rubber, superelastic, pneumatic, polyurethane	polyurethane	polyurethane
	3.2	Tyre size, front x2	φ286×120	φ286×120
	3.3	Tyre size, rear	φ343×135	φ343×135
Tyres, chassis	3.5	Wheels, number front rear (x = driven wheels)	2/1x	2/1x
	3.6	Tread, front	b ₁ (mm)	682
	3.7	Tread, rear	b ₂ (mm)	7
	4.1	Tilt of mast/fork carriage forward/backward α / (°)	1/5	1/5
	4.2	Height, mast lowered h ₁ (mm)	1944	1944
	4.3	Free lift h ₂ (mm)	100	100
	4.4	Lift h ₃ (mm)	2500	2500
	4.5	Height, mast extended h ₄ (mm)	3220	3220
	4.7	Height of overhead guard STD. h ₅ (mm)	1890	1890
	4.8	Seat height h ₆ (mm)	1020	1020
Dimensions	4.12	Coupling height h ₁₂ (mm)	/	/
	4.19	Overall length l ₁ (mm)	2295	2435
	4.20	Length to face of forks l ₂ (mm)	1375	1515
	4.21	Overall width b ₁ (mm)	800	800
	4.22	Fork dimensions ISO2331 s/e/l (mm)	35/100/920	35/100/920
	4.23	Fork carriage DIN 15 173 --- ISO 2328, class/type A/B	ISO2328 2A	ISO2328 2A
	4.24	Fork-carriage width b ₂ (mm)	790	790
	4.25	Distance between fork-arms b ₃ (mm)	210-790	210-790
	4.31	Ground clearance, laden, below mast m ₁ (mm)	65	65
	4.32	Ground clearance, centre of wheelbase m ₂ (mm)	95	65
Performance data	4.34.1	Aisle width for pallets 1000 x 1200 crossways A _{1c} (mm)	2765	2905
	4.34.2	Aisle width for pallets 800 x 1200 lengthways A _{1c} (mm)	2880	3020
	4.35	Turning radius W _a (mm)	1200	1340
	4.36	Internal turning radius b ₁₃ (mm)	425	425
	5.1	Travel speed, laden/unladen	6.5/6.5	6/6.5
	5.2	Lift speed, laden/unladen	0.110/0.230	0.100/0.230
	5.3	Lowering speed, laden/unladen	0.269/0.225	0.269/0.225
	5.5	Drawbar pull, laden/unladen	N	2700/2750
	5.6	Max. Drawbar pull, laden/unladen	N	2400/2450
	5.7	Gradeability, laden/unladen	%	8/10
Electric Engine	5.8	Max. gradeability, laden/unladen	%	8/10
	5.9	Acceleration time, laden/unladen (0-Max speed)	s	3.7/3.5
	5.10	Service brake	Hydraulic	Hydraulic
		Parking brake	Mechanical	Mechanical
	6.1	Drive motor rating S2 60 min	kW	3.8 AC
	6.2	Lift motor rating at S3 15%	kW	4 DC
	6.3	Battery acc.to DIN 43 531/35/36 A,B,C,no	no	no
	6.4	Battery voltage, nominal capacity K5	V/Ah	24/240
	6.5	Battery weight	kg	240
		Max.battery weight	kg	310
	Min.battery weight	kg	350	
	Battery dimensions	l/b/h(mm)	675×333×580	
	Energy consumption acc. to VDI cycle	kWh/h	2	
	Type of drive control		MOSFET/AC	
Addition data	9.1	Manufacturer	CURTIS / KOLLMORGEN	
	9.1	Type	1298/ACS24-XS	
	10.1	Operating pressure for attachments	bar	
	10.2	Oil volume for attachments	l/min	
10.3	Hydraulic Tank - capacity (drain & refill)	liter(gal)		
10.7	Sound pressure level at the driver's seat	dB (A)		
10.8	Towing coupling, type DIN 15170	/		

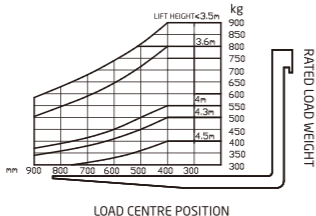
Note: *with CE



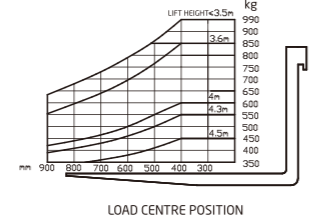
RATED CAPACITIES AND LOAD CENTRES GRAPH



RATED CAPACITIES AND LOAD CENTRES GRAPH



RATED CAPACITIES AND LOAD CENTRES GRAPH



0.75~0.99t A Series 3-wheel Mast Specification

Type	Model	Lifting height	Lowered overall height	Overall height		Free lifting height		Tilt range		Capacity (Mast vertical to ground)			
				With backrest	Without backrest	With backrest	Without backrest	FWD	RWD	Load center@500mm	Load center@400mm	0.9t	0.99t
				mm	mm	mm	mm	(°)	(°)	kg	kg	kg	
Duplex wide view mast	M200	2000	1694	2720	2694	100	100	1	5	750	900	990	
	M240	2400	1894	3120	3094	100	100	1	5	750	900	990	
	M250	2500	1944	3220	3194	100	100	1	5	750	900	990	
	M270	2700	2044	3420	3394	100	100	1	5	750	900	990	
	M300	3000	2194	3720	3694	100	100	1	5	750	900	990	
	M330	3300	2344	4020	3994	100	100	1	5	750	900	990	
	M350	3500	2444	4220	4194	100	100	1	5	750	900	990	
	M360	3600	2494	4320	4294	100	100	1	5	700	800	850	
	M400	4000	2744	4744	4744	100	100	1	5	450	550	600	
	M430	4300	2909	5059	5059	100	100	1	5	400	500	550	
M450	4500	3019	5269	5269	100	100	1	5	300	400	450		

With sideshifter minus 50kg.



A Series Mini Range 3-wheel Electric Forklift Truck

with capacities of 750 to 990kg



Printed in China 2016/11/EN



ZHEJIANG HANGCHA IMP. & EXP. CO., LTD.

Factory site: No. 88, Donghuan Rd., Lin'an Economic Development Zone, Zhejiang, China (311305)

Tel: +86-571-88926735 88926755
Fax: +86-571-88132890 88926789

sales@hcforklift.com
www.hcforklift.com



HANGCHA GROUP CO., LTD. reserves the right to make any changes without notice concerning colors, equipment, or specifications detailed in this brochure, or to discontinue individual models. The colors of trucks, delivered may differ slightly from those in brochures.

The World of Hangcha



A Series Mini Range 3-wheel Electric Forklift Truck

A series 0.75/0.90/0.99t mini range 3-wheel electric forklift truck is suitable for working in narrow channel even in elevator. Compact design provide small turning radius (1200mm), it is an ideal equipment for warehouse, supermarket, workshop.

Accurate/ Advanced/ Agility

Appearance

/ Eyeball catching designed smooth outline and metal material applied for exposed parts, all provide compact construction of the A series mini range three-wheel electric forklift truck.



Stability

/ Rear-wheel driving technology, sinking type designed battery layout provides perfect stability. Steering angle sensor (Option) will reduce the travelling speed during cornering.

Flexibility

/ The traction motor assists the gear of pump motor steering, thanks to the right and left 90 degrees turning of drive wheel, the truck can travel in a narrow space flexibly.

Comfort

/ The ergonomically designed compartment provides more comfortable operation, users can read the information from the dashboard intuitively.
/ The wide view mast provides better forward visibility, the soft landing system decreases the noise and shock of the mast significantly.
/ Low noise, no exhaust emission, energy saving ... all meet the environment friendly requirements.

Reliability & Safety

/ World famous motor controllers, connectors, battery plug, emergency switch and the main electrical components are applied to ensure the reliability of the performance and provides easy service.
/ Emergency switch is standard specification which meets the Euro safety regulation.
/ Both electronics and hydraulic system are equipped with overloading protection system.

Easy Maintenance

/ Full opened cover is easy for maintenance.
/ The left and right covers are enclosed to avoid dust and water.
/ AC motor is no need to replace the carbon brush, low service cost.

Advancement

/ AC traction motor + DC pump motor system provides high performance and prolong the battery lifetime.
/ The combined controller (made by INMOTION, imported from USA) provides advanced and reliable performance.
/ High quality traction motor and reducer parts. Maintenance free traction motor is no need to replace the carbon brush, low service cost.
/ High frequency MOSFET integrated control system provides accurate control of travelling, lifting and better adjustable performance that better matches with the motor. No roll-back on ramp is also provided thanks to MOSFET controller. Motor brake is for regenerative braking during deceleration, direction changing, and downward slope.
/ User can see the information about battery power, running hours and self diagnosis from the instrument even in the bad environment.
/ Travelling, lifting and steering controlled by the MOSTFET controller.

Standard Specification

/ White marked rubber tyre
/ High capacity battery 24V/240Ah~420Ah
/ Accelerator import from korea
/ Emergency switch
/ 2nd hydraulic function
/ Full electric controlled travelling, lifting and steering
/ Multi-functions instrument
/ 2.5m wide view duplex mast
/ Reversing beeper
/ Front working light
/ Tool box, document bag
/ Anti-slip pedal, handrail
/ 920mm length fork

Options

/ 3rd hydraulic function
/ 2~4.5m duplex mast
/ Different length forks
/ Different length foldable forks
/ High performance imported battery
/ Polyurethane tyre (Imported from Japan)
/ Different attachments
/ Additional weight
/ Seat with armrest



Battery Specification

Capacity Ah Manufacturer	0.75t				0.9t		0.99t
	240Ah	270Ah	300Ah	330Ah	420Ah	450Ah	560Ah
ZIBO(Shan dong)	●	○	○	○	●	X	●
XUNQI(An hui)	○	○	○	○	○	X	●
FAAM (Italy)	○	X	X	X	X	○	○ 520Ah
HOPPECKE (Germany)	○	○	○	○	○	○	○ 520Ah
HAWK(Germany)	○	○	○	○	○	X	○ 520Ah
GS (Japan)	X	○	X	X	○ 390Ah	X	○ 520Ah
Charger(SN Shanghai)	CZB3J-35A/24V				CZB3J-65A/24V		

Note: ● Standard capacity ○ Optional capacity

